



the hoxton

The Hoxton, Lloyd Amsterdam  
Oostelijke Handelskade 34, 1019 BN



Hallo Amsterdam  
*Hox II incoming*

the hoxton

The Hoxton, Lloyd Amsterdam  
Oostelijke Handelskade 34, 1019 BN

# The Hoxton, Lloyd Amsterdam

Oostelijke Handelskade 34, 1019 BN  
Amsterdam, Netherlands

Housed in a building that was originally commissioned by the Royal Holland Lloyd Shipping Company in 1921, The Hoxton, Lloyd Amsterdam has 136 bedrooms, a cocktail bar, a European brasserie, and an original Dutch windmill for a neighbour.

136 rooms

1 restaurant,  
1 cocktail bar  
& 1 terrace

2 apartment  
meeting spaces





## 136 rooms

Interiors nod to the building's unique history; in the individually designed bedrooms plush velvet headboards, bold geometric patterns and contemporary furnishings combine to eye-catching effect.



## Hosting a meeting or party?

The Apartment is a brand new space that's perfect for any meetings and events you are planning. There are two separate spaces that can be used individually, together, or combined with the pantry - whatever suits your needs.



## No rip-off policy

Our rooms have everything you need and nothing you don't. Everyone gets water, fresh milk, coffee and tea, and a fridge that's yours to stock with snacks and drinks from our Hox Shop, where you'll find beers, wines and soft drinks at supermarket prices.



## Wining and dining?

There's not one, but two places for you to wine and dine in style. Opt for Barbue, a flamboyant cocktail bar that's inspired by turn of the century Argentina, or grab a table at the Breman Brasserie, our European restaurant that's big on seafood dishes, create-your-own bagel towers and desserts.

### The neighbourhood

As always, we've chosen a neighbourhood with loads of personality – the hotel is located in the Eastern Docklands (Oostelijke Eilanden), a vibrant cultural hotspot on the banks of the IJ waterway where a rich maritime heritage mixes with thriving urban regeneration - expect quirky architecture, design shops and galleries. One of our favourite corners of Amsterdam, here you've got it all, with the sights in easy walking distance, as well as a more local way of life to dip in and out of.



#### How to get there

Rietlandpark tram stop is just three minutes' walk away from here and Central station is an eight-minute drive away, where you can hop on regional and international trains. Amsterdam Schiphol airport is twenty minutes' drive from us.

#### Want to know more?

events.lloyd@thehox.com  
+31 (0) 20 2625534

A place to hang | *Our lobby*



**the hoxton**

The Hoxton, Lloyd Amsterdam  
Oostelijke Handelskade 34, 1019 BN



Get comfy  
*136 bedrooms*

Get comfy



the hoxton



We've got you covered for your best night's sleep with comfy mattresses and black out blinds to help you drop off, and you'll find our very own bathroom amenities range, Blank, to get you squeaky clean the next morning.

The Hoxton, Lloyd Amsterdam  
Oostelijke Handelskade 34, 1019 BN

Cosy



*2 adults | Queen bed | 17 - 21 sqm*

Perfect if you're travelling light, our Cosy rooms are affordable without compromising on style and comfort.

the hoxton

The Hoxton, Lloyd Amsterdam  
Oostelijke Handelskade 34, 1019 BN

# Roomy

*2 adults | Queen bed | 22 - 29 sqm*

With a little more space to stretch out, our Roomy rooms are great for couples looking to stay over.



# Roomy Twin



*2 adults | 2 singles | 22 - 29 sqm*

With a little more space to stretch out, our Roomy Twin rooms are great for friends looking to stay over.

Biggy



*2 adults | King bed | 30.2 sqm*

Go all out with a Biggy room, our biggest and best, with a huge bed, desk for dreaming up big ideas, lounge space and a set of cracking views.

**the hoxton**

The Hoxton, Lloyd Amsterdam  
Oostelijke Handelskade 34, 1019 BN

# Biggy Bunk

*4 adults | 1 Queen bed + Bunk bed | 30.2 sqm*  
Channel your inner child in one of our Biggy Bunk rooms - the only thing you have to decide is who's going up top!



# Biggy Double



*4 adults | King bed | 32 - 49 sqm*

Gather three of your pals for the ultimate friends holiday to the Dam and share our Biggy Double rooms to split the cost and leave you more money for sightseeing.

# Studio



*4 adults | King bed with either a Sofa bed or Queen bed | 50 - 52 sqm*

Our Studios are THE place to be if you're travelling as a family or group of friends on a budget. With a king bed and sofa bed all part of the spacious layout, you can save a little money by booking one versus two rooms; with all the usual Hox comforts to go with.

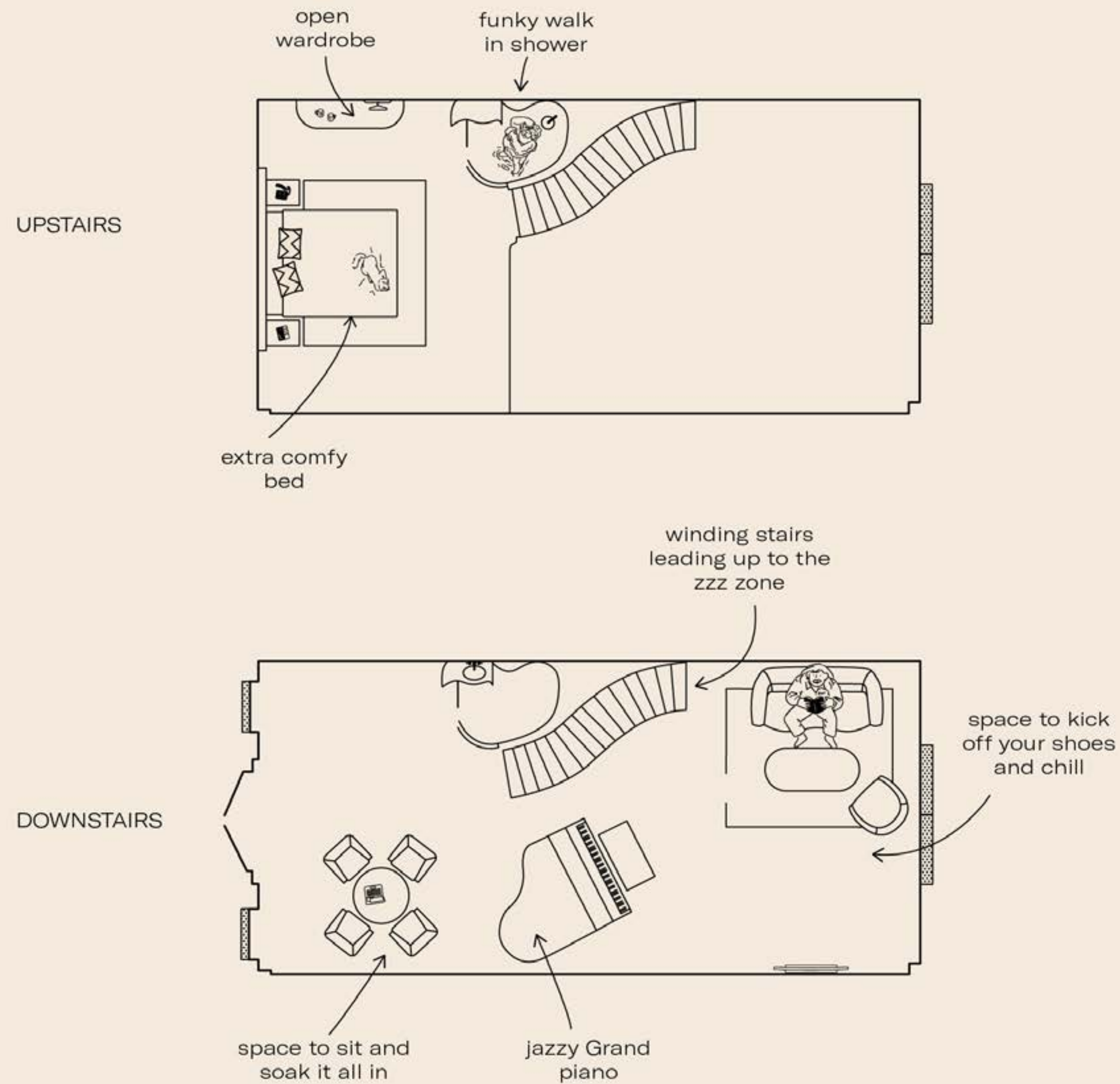


- Concept rooms -  
*3 suites*

the hoxton

The Hoxton, Lloyd Amsterdam  
Oostelijke Handelskade 34, 1019 BN

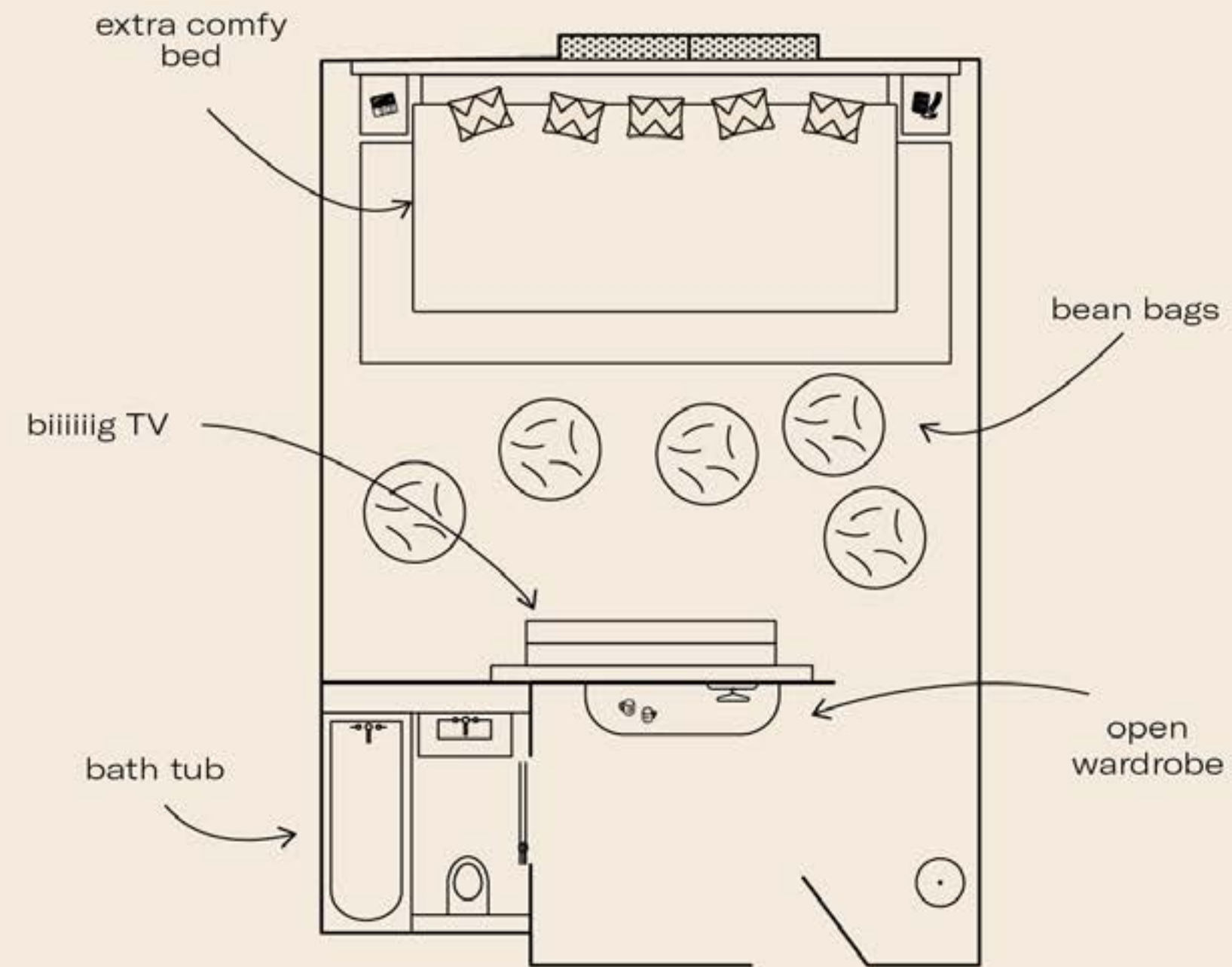
# Tune



4 adults | King bed | 43.2 sqm

Hit all the high notes with our gorgeously appointed Tune concept room, complete with a grand piano for all you artistes; whether budding performer or seasoned virtuoso. This decadent space for four is spread across two levels connected by a statement spiral staircase, and with a separate living area for live piano sessions.

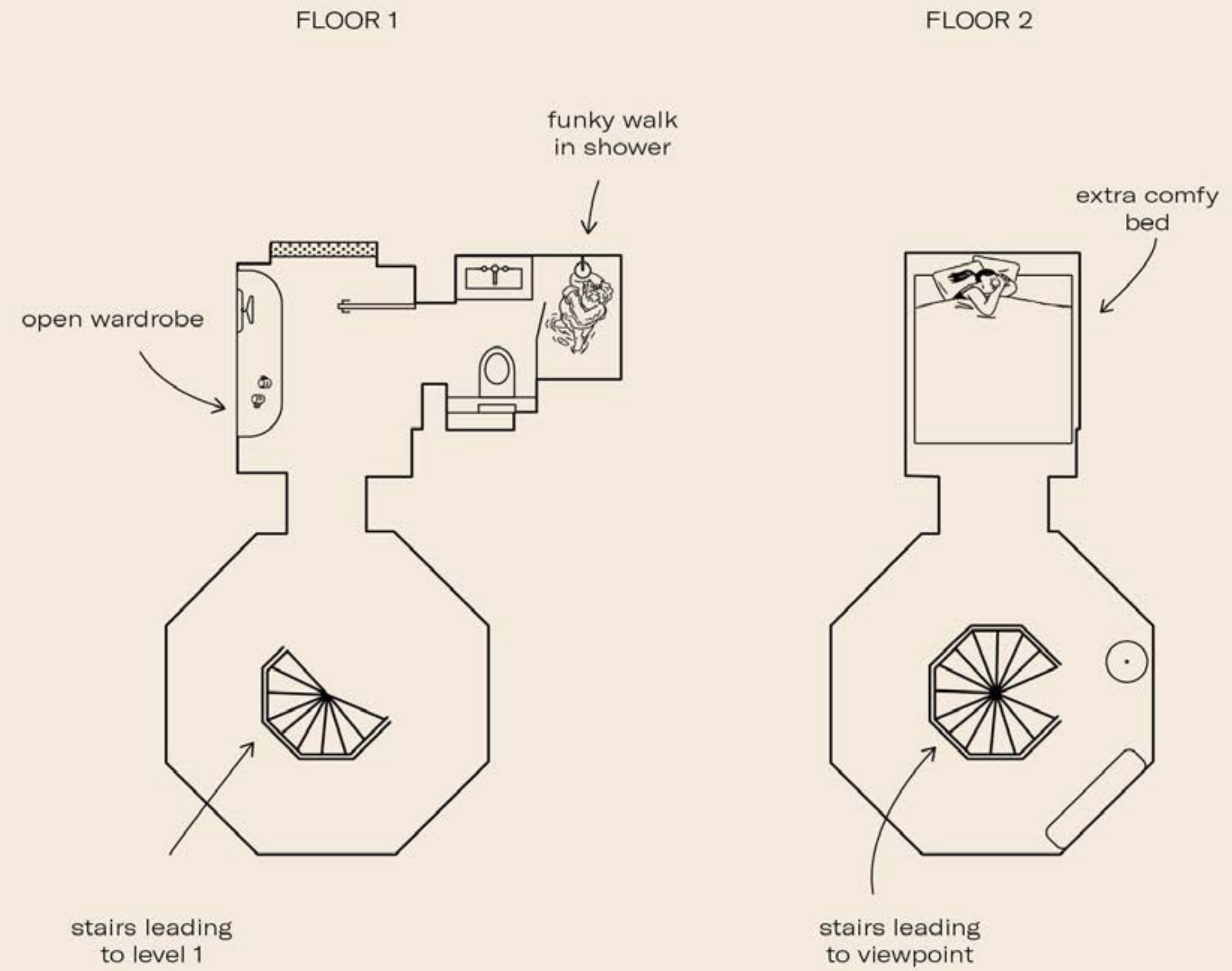
# Gather



*5 adults | 5 person bed | 38.9 sqm*

A unique wood-panelled suite, the Gather Room comes with a dining area, antique rugs and a neon-green bathroom. Bean bags, a huge TV and a state-of-the-art five-person bed is all part of the experience, too. Hello, party.

# Tower



2 adults | Queen bed | 22 sqm

Check in and chill out with a sky-high tableau of Amsterdam: in our top-floor Tower Room, you'll be treated to a queen double, along with the best views in the house.

A modern lounge area with a bar, seating, and a bookshelf. The room features a light-colored wall, a wooden bookshelf, a blue sofa, a green armchair, and a bar counter with stools. The floor is made of wood in a herringbone pattern. The lighting is warm and ambient, with several pendant lights hanging from the ceiling. The overall atmosphere is cozy and contemporary.

# Meetings & party time

*2 meeting rooms*

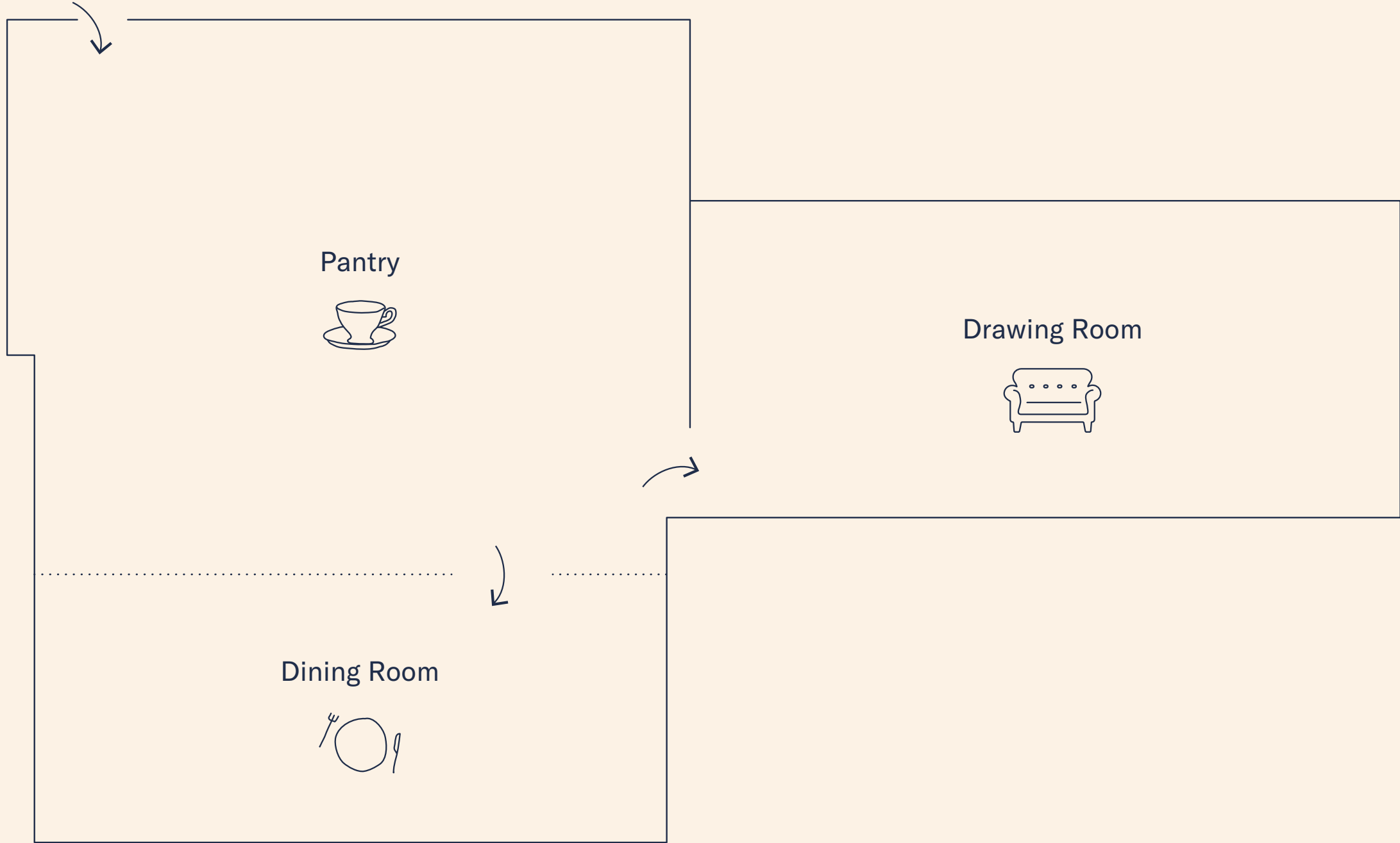
## The Apartment

---

If you want somewhere unique and creative to host your next team workshop in, let our Amsterdam meeting and events space tempt you in. With warm wooden panelling and statement lights, our tailored Apartment space is a great go-to for networking, brainstorming and bright ideas.



# The Apartment | 3 rooms



Room	DIMS (SQM)	Capacity		
		Boardroom	Theatre	Dining
The Pantry	81	-	-	-
Drawing Room	50	24	45	26
Dining Room	40	24	36	26
Dining Room + Pantry	121	-	68	48
Total	171	48	81	52

## Pantry

---

The Pantry is our go-to kitchen space for your private event or party of dreams. This is your HQ for curated dining, whether you want creative canapés and a private bar, or a full-scale feast with all the trimmings.



## Drawing Room

---

Our spacious living room: choose this for a get-together seating up to 24 people, complete with a projector and cinema-style TV screen.



## Dining Room

---

The dining room is a great bet for small-scale pitches and group brainstorm sessions; expect sculptural seating and a bold colour palette for up to 24 people sitting. You can combine this room with the pantry for some extra space, it's a win win!



A photograph of a restaurant interior. The space is bright and airy, featuring a central pillar wrapped in grey stone tiles, topped with a large arrangement of green plants. The ceiling has exposed wooden beams and several modern pendant lights. The dining area is furnished with round tables and wooden chairs, some with patterned upholstery. A bar area with a white countertop and a large, textured lampshade is visible on the right. The overall aesthetic is contemporary and sophisticated.

# Destination dining

*Barbue & Breman Brasserie*

# Restaurants

## Wining & dining

---

Perfect for a tippie or two, Barbue is a flamboyant cocktail bar that's inspired by turn of the century Argentina. In the mood for comfort food? Then head to the Breman Brasserie, our European restaurant that's big on seafood dishes, create-your-own bagel towers and desserts.



**the hoxton**